

NEW TERRACOTTA  
— PORTUGUESE HANDMADE —

# GLAZED TILES

## Technical Guide

4<sup>th</sup> Edition 2020

New Terracotta has its core strength in the wide knowledge of colours. We are always ahead of different colour expressions.

A colour reaches its maximum when the pigment has been developed to the highest emotional resonance for that colour. There is so much more to our work than fine raw materials and high pigment loads. At New Terracotta, we are forging together the right balance of pigment, glaze, history, science and emotion.

The collection features **142** subtle, luminous, semi-transparent, deep, metallic colours. Each of them has a historical and artistic background.

## BASIC COLOURS

Ref.	Colour Name	Glaze Definition	Glaze Variation	Long Term Crazing	Pools, Lakes Fountains	Exterior Facades
B001	Yellow Yolk	<i>glossy translucent</i>	<i>low</i>		✓	✓
B002	Eggshell White	<i>glossy translucent</i>	<i>low</i>		✓	✓
B007	Delicate Peach	<i>glossy translucent</i>	<i>moderate</i>		✓	✓
B010	Flamingo Baby	<i>glossy translucent</i>	<i>moderate</i>		✓	✓
B011	Flamingo Pink	<i>glossy translucent</i>	<i>moderate</i>		✓	✓
B012	Jet Set Black	<i>glossy solid</i>	<i>low</i>	yes	✓	✓
B014	Chicago Cobalt Blue	<i>glossy solid</i>	<i>low</i>	yes	✓	✓
B017	Midnight Indigo	<i>satin to glossy solid</i>	<i>low</i>		✓	✓
B020	Vanilla Cream	<i>glossy translucent</i>	<i>moderate</i>		✓	✓
B022	Mint Macaron	<i>glossy translucent craquelé</i>	<i>moderate</i>			
B023	Lavender Violet Blue	<i>glossy translucent</i>	<i>moderate</i>		✓	✓
B025	Oyster Mushroom White	<i>glossy translucent craquelé</i>	<i>moderate</i>			
B028	Charcoal Grey	<i>glossy solid</i>	<i>moderate</i>		✓	✓
B029	Elephant Grey	<i>glossy translucent</i>	<i>low</i>		✓	✓
B037	Soft Lilac	<i>glossy translucent</i>	<i>moderate</i>		✓	✓
B038	Neon Green	<i>glossy translucent</i>	<i>low</i>		✓	✓
B039	Shallow Waters	<i>glossy translucent craquelé</i>	<i>moderate</i>			
B040	Forest Green	<i>glossy translucent</i>	<i>moderate</i>	yes	✓	✓
B042	Ice Grey White	<i>glossy solid</i>	<i>low</i>		✓	✓
B043	French Grey	<i>glossy solid</i>	<i>low</i>		✓	✓
B044	Divine Grey	<i>glossy solid</i>	<i>low</i>		✓	✓
B046	Green Mojito	<i>glossy translucent craquelé</i>	<i>moderate</i>			
B049	Pikachu Yellow	<i>glossy solid</i>	<i>low</i>		✓	✓
B051	Blue Dolphin	<i>glossy translucent</i>	<i>moderate</i>		✓	✓
B053	Saffron Yellow	<i>glossy translucent</i>	<i>high</i>		✓	✓
B054	Crepe Caramel	<i>glossy translucent</i>	<i>high</i>	yes	✓	✓
B055	Blue Sky	<i>glossy translucent</i>	<i>low</i>		✓	✓
B057	Brown Beer Bottle	<i>glossy translucent</i>	<i>moderate</i>	yes	✓	✓
B059	Sand Bisque	<i>glossy translucent</i>	<i>moderate</i>		✓	✓
B061	Transparent Violet	<i>glossy translucent craquelé</i>	<i>high</i>			
B065	Misty Blue	<i>glossy translucent craquelé</i>	<i>moderate</i>			
B067	Spearmint Spa	<i>glossy translucent craquelé</i>	<i>high</i>			
B068	Crystal Blue Waters	<i>glossy translucent craquelé</i>	<i>moderate</i>			
B069	Electric Blue	<i>glossy solid</i>	<i>low</i>		✓	✓
B071	Paradise Turquoise	<i>glossy translucent craquelé</i>	<i>moderate</i>			
B074	Emerald Lake	<i>glossy translucent</i>	<i>moderate</i>		✓	✓
B075	Ultramarine Sea	<i>glossy translucent craquelé</i>	<i>high</i>			
B083	Ocean Surf	<i>glossy translucent</i>	<i>moderate</i>		✓	✓
B088	Tempest Blue	<i>glossy translucent</i>	<i>moderate</i>	yes	✓	✓
B089	Tempest Green	<i>glossy translucent</i>	<i>moderate</i>		✓	✓
B090	Penguin White	<i>satin to glossy solid</i>	<i>low</i>		✓	✓
B091	Minimal White	<i>glossy solid</i>	<i>low</i>		✓	✓
B092	Lemon Tart	<i>glossy translucent</i>	<i>moderate</i>		✓	✓

## BASIC COLOURS

Ref.	Colour Name	Glaze Definition	Glaze Variation	Long Term Crazing	Pools, Lakes Fountains	Exterior Facades
B096	Desert Bisque	<i>glossy translucent</i>	<i>moderate</i>		✓	✓
B097	Water Bisque	<i>glossy translucent craquelé</i>	<i>moderate</i>			
B101	Innocent Pink	<i>glossy solid</i>	<i>low</i>		✓	✓
B103	Pink Ballet	<i>glossy solid</i>	<i>moderate</i>		✓	✓
B110	Antique Rose Velvet	<i>glossy translucent</i>	<i>low</i>		✓	✓
B113	Frozen Margarita	<i>glossy translucent craquelé</i>	<i>low</i>			
B150	Fresh Salmon	<i>glossy translucent</i>	<i>low</i>		✓	✓
B151	Blue Fronteira	<i>satin to glossy solid</i>	<i>low</i>		✓	✓
B152	Blue Provence	<i>satin to glossy solid</i>	<i>low</i>		✓	✓
B190	Transparent White	<i>glossy translucent craquelé</i>	<i>low</i>			
B202	Giraffe Print	<i>glossy translucent craquelé</i>	<i>moderate</i>			
B204	Giraffe Yellow	<i>glossy translucent craquelé</i>	<i>moderate</i>			
B206	Giraffe Blue	<i>glossy translucent craquelé</i>	<i>moderate</i>			
B208	Giraffe Pink	<i>glossy translucent craquelé</i>	<i>moderate</i>			
B210	Giraffe Green	<i>glossy translucent craquelé</i>	<i>moderate</i>			
B301	Burnt Siena	<i>glossy solid</i>	<i>low</i>		✓	✓
B600	Green Guru	<i>glossy solid</i>	<i>low</i>		✓	✓
B608	Green Delight	<i>glossy solid</i>	<i>low</i>		✓	✓
B618	Amazon Green	<i>glossy solid</i>	<i>low</i>		✓	✓
B625	Olive Green	<i>glossy solid</i>	<i>low</i>		✓	✓
B628	Khaki Green	<i>glossy solid</i>	<i>low</i>		✓	✓
B700	British Racing Green	<i>glossy translucent</i>	<i>moderate</i>	yes	✓	✓
B705	So Sweet Teal	<i>glossy solid</i>	<i>low</i>		✓	✓

## MATT COLOURS

Ref.	Colour Name	Glaze Definition	Glaze Variation	Long Term Crazing	Pools, Lakes Fountains	Exterior Facades
M800	Belgian Chocolate Matt	<i>satin matt</i>	<i>low</i>		✓	✓
M810	Italian Coffee Matt	<i>satin matt</i>	<i>low</i>		✓	✓
M815	Paper Black Matt	<i>satin matt</i>	<i>low</i>		✓	✓
M820	Graphite Grey Matt	<i>satin matt</i>	<i>low</i>		✓	✓
M825	Smoke Grey Matt	<i>satin matt</i>	<i>low</i>		✓	✓
M830	Cotton White Matt	<i>satin matt</i>	<i>low</i>		✓	✓
M835	Industrial Grey Matt	<i>satin matt</i>	<i>low</i>		✓	✓
M845	Vintage Red Matt	<i>satin matt</i>	<i>low</i>		✓	✓
M850	Glaciar White Matt	<i>satin matt</i>	<i>low</i>		✓	✓
M855	Elegant Greige Matt	<i>satin matt</i>	<i>low</i>		✓	✓
M860	Safari Green Matt	<i>satin matt</i>	<i>low</i>		✓	✓
M865	Black Evergreen Matt	<i>satin matt</i>	<i>low</i>		✓	✓
M875	Adorable Pink Matt	<i>satin matt</i>	<i>low</i>		✓	✓
M880	True Rose Matt	<i>satin matt</i>	<i>low</i>		✓	✓
M885	Perfect Nude Matt	<i>satin matt</i>	<i>low</i>		✓	✓
M890	White Sand Matt	<i>satin matt</i>	<i>low</i>		✓	✓
M900	So Chic Teal Matt	<i>satin matt</i>	<i>low</i>		✓	✓
M910	Historical Blue Matt	<i>satin matt</i>	<i>low</i>		✓	✓
M915	Royal Blue Matt	<i>satin matt</i>	<i>low</i>		✓	✓
M920	Forever Blue Matt	<i>satin matt</i>	<i>low</i>		✓	✓
M925	Summer Blue Matt	<i>satin matt</i>	<i>low</i>		✓	✓

## OXIDE EXPLOSIONS

Ref.	Colour Name	Glaze Definition	Glaze Variation	Long Term Crazing	Pools, Lakes Fountains	Exterior Facades
X010	Deep Blue Explosion	<i>glossy translucent</i>	<i>high</i>	<i>yes</i>	✓	✓
X011	Ocean Blue Explosion	<i>glossy translucent</i>	<i>high</i>	<i>yes</i>	✓	✓
X020	Mystery Teal Explosion	<i>glossy translucent</i>	<i>high</i>	<i>yes</i>	✓	✓
X021	Aqua Mist Explosion	<i>glossy translucent</i>	<i>high</i>	<i>yes</i>	✓	✓
X022	Petroleum Explosion	<i>glossy translucent</i>	<i>high</i>	<i>yes</i>	✓	✓
X023	Galaxy Explosion	<i>glossy translucent</i>	<i>high</i>	<i>yes</i>	✓	✓
X031	Soft Emerald Explosion	<i>glossy translucent</i>	<i>high</i>	<i>yes</i>	✓	✓
X032	Wisteria Blossom Explosion	<i>glossy translucent</i>	<i>high</i>	<i>yes</i>	✓	✓
X033	Coralline Explosion	<i>glossy translucent</i>	<i>high</i>		✓	✓
X042	Jungle Green Explosion	<i>glossy translucent</i>	<i>high</i>	<i>yes</i>	✓	✓
X044	Metallic Green Explosion	<i>glossy translucent</i>	<i>high</i>	<i>yes</i>	✓	✓
X050	Vibrant Bamboo Explosion	<i>glossy translucent</i>	<i>high</i>	<i>yes</i>	✓	✓
X060	Don Pesto Explosion	<i>glossy translucent</i>	<i>high</i>	<i>yes</i>	✓	✓
X061	El Guacamole Explosion	<i>glossy translucent</i>	<i>high</i>	<i>yes</i>	✓	✓
X071	Hazelnut Explosion	<i>glossy translucent</i>	<i>moderate</i>	<i>yes</i>	✓	✓
X072	Classic Concrete Explosion	<i>glossy translucent</i>	<i>moderate</i>	<i>yes</i>		
X074	Stylish Grey Explosion	<i>glossy translucent</i>	<i>moderate</i>	<i>yes</i>		
X075	Sophisticated Grey Explosion	<i>glossy translucent</i>	<i>moderate</i>	<i>yes</i>		
X076	Wabi-Sabi Explosion	<i>glossy translucent</i>	<i>moderate</i>	<i>yes</i>	✓	✓

## SPECIAL FIRING

Ref.	Colour Name	Glaze Definition	Glaze Variation	Long Term Crazing	Pools, Lakes Fountains	Exterior Facades
S001	Red Chili Pepper	<i>glossy solid craquelé</i>	<i>moderate</i>		✓	✓
S008	Acid Yellow	<i>glossy solid craquelé</i>	<i>moderate</i>		✓	✓
S010	Orange Caviar	<i>glossy solid craquelé</i>	<i>moderate</i>		✓	✓
S018	Fresh Wasabi	<i>glossy solid craquelé</i>	<i>moderate</i>		✓	✓
S030	So Eggplant	<i>glossy translucent</i>	<i>moderate</i>		✓	✓
S032	Yaya Carrot	<i>glossy translucent</i>	<i>low</i>		✓	✓
S050	Red Tomato Delicious	<i>glossy translucent</i>	<i>low</i>		✓	✓
S304	Du Vin Rouge	<i>glossy solid</i>	<i>low</i>		✓	✓
S320	Pretty Red	<i>glossy solid</i>	<i>low</i>		✓	✓
S340	Skinny Zucchini	<i>glossy translucent craquelé</i>	<i>high</i>			
S341	Caramel Spaghetti	<i>glossy translucent craquelé</i>	<i>high</i>			
S380	Red Cobra	<i>reactive craquelé</i>	<i>moderate</i>		✓	✓
S381	Orange Cobra	<i>reactive craquelé</i>	<i>moderate</i>		✓	✓
S382	Yellow Cobra	<i>reactive craquelé</i>	<i>moderate</i>		✓	✓
S383	Funky Mint Cobra	<i>glossy translucent craquelé</i>	<i>moderate</i>			
S384	Spearmint Splash Cobra	<i>glossy translucent craquelé</i>	<i>moderate</i>			
S385	Violet Sunset Cobra	<i>glossy translucent craquelé</i>	<i>moderate</i>			
S390	Blue Gaudi	<i>glossy translucent craquelé</i>	<i>high</i>			
S391	Green Gaudi	<i>glossy translucent craquelé</i>	<i>high</i>			
S392	Lime Gaudi	<i>glossy translucent craquelé</i>	<i>high</i>			
S393	Atlantic Blue Gaudi	<i>glossy translucent craquelé</i>	<i>high</i>			
S394	Caribbean Green Gaudi	<i>glossy translucent craquelé</i>	<i>high</i>			
S395	Salted Caramel Gaudi	<i>glossy translucent craquelé</i>	<i>high</i>			
S396	Lemon Sorbet Gaudi	<i>glossy translucent craquelé</i>	<i>high</i>			
S397	Dame Blanche Gaudi	<i>glossy translucent craquelé</i>	<i>high</i>			

## VINTAGE METALLICS

Ref.	Colour Name	Glaze Definition	Glaze Variation	Long Term Crazing	Pools, Lakes Fountains	Exterior Facades
V006	Lava	<i>metallic matt</i>	<i>low</i>			
V009	Black Nickel	<i>metallic glossy</i>	<i>low</i>	<i>yes</i>	✓	✓
V012	Old Gold	<i>metallic craquelé</i>	<i>moderate</i>		✓	✓
V018	Bronze Gold	<i>metallic craquelé</i>	<i>high</i>		✓	✓
V109	Black Nickel Eruption	<i>metallic glossy</i>	<i>low</i>	<i>yes</i>	✓	✓
V112	Old Gold Eruption	<i>metallic craquelé</i>	<i>moderate</i>		✓	✓
V118	Bronze Gold Eruption	<i>metallic craquelé</i>	<i>high</i>		✓	✓
V200	Perfect Pearl	<i>metallic matt</i>	<i>moderate</i>			
V210	Blush Copper	<i>metallic matt</i>	<i>moderate</i>			
V220	Olive Bronze	<i>metallic matt</i>	<i>moderate</i>			
V240	Pink Mica	<i>metallic matt</i>	<i>moderate</i>			

**Glaze Definition**

All our craquelé is deliberately induced, usually known as artistic craquelé.

**Glaze Variation**

Glaze and texture variation is rated as follows:

Low - tile can vary slightly

Moderate - tile can vary slightly to moderately

High - tile can vary significantly

Very High - tile can show a large variation

**Long Term Crazing**

According to Determination of Crazing Resistance test results, EN ISO 10545-11 / ASTM C 424-93.

**Pools, Lakes and Fountains**

According to Determination of Crazing Resistance test results, EN ISO 10545-11 / ASTM C 424-93; according to Determination of Chemical Resistance test results, EN ISO 10545-13 / ASTM C 650-04.

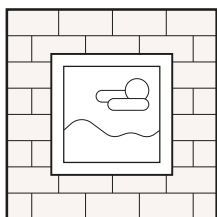
**Exterior Facades**

According to Determination of Frost Resistance test results, EN ISO 10545-12 (limit at - 20°C ).

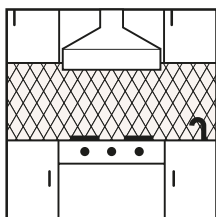
MATCHING GLAZES	Basic Colours 66	Matt Colours 21	Oxide Explosions 19	Special Firing 25	Vintage Metallics 11
Field Tiles	✓	✓	✓	✓	✓
Trims	✓	✓	–	✓	●
New Modern	✓	✓	–	✓	●
Portuguese Heritage	✓	✓	–	✓	●

● V006 Lava, V109 Black Nickel Eruption, V112 Old Gold Eruption, V118 Bronze Gold Eruption do not apply.

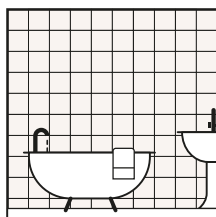
## TILES SUITABILITY



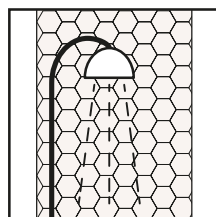
Walls



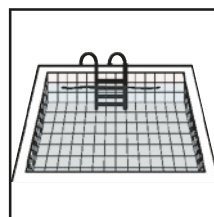
Kitchen



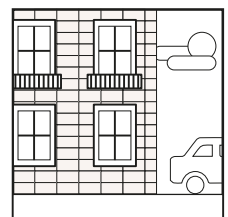
Bathroom



Shower



Swimming Pools



Facades

Please note that these are only recommendations and in some cases the tiles may be suitable for installation in additional spaces. Contact us for more information.

New Terracotta Tile Collection is suitable for most interior and exterior applications, including residential and commercial floors, walls, counters, showers, bathrooms, swimming pools, spas and fountains. Because the purchase of New Terracotta Tile for your home or commercial project represents an important investment, proper installation and maintenance is critical.

## TILE UNDERSTANDING

It is important to understand that the differences in colour, shape, size, texture and moisture absorption are the unique characteristics that distinguish each of these tile products.

### Glazed Tile

A coloured, liquid glaze is applied to the surface of a clay body.

The tile is fired in a kiln at very high temperatures of more than 1.050 °C .

The glazing process defines the colour and surface texture and produces a hard, non-porous, impermeable tile with a very low water absorption rate.

Glazed tiles are easier to clean and any liquid on its surface will drain faster.

### Size and Length Variation

Our tiles shrink during the production process.

You can expect some variation, especially on longer tiles.

### Lengthwise Bowing and Surface Undulation

Clay is an elastic material, therefore it will attempt to regain its original shape as it moves through the production process. For this reason, you can expect both an acceptable amount of lengthwise bowing and a surface undulation.

Undulation can occur anywhere on the surface and could include a slightly raised corner or edge.

### Colour and Glaze Variation

Shade variation is inherent in all fired ceramic products and certain tiles will show greater variation within their dye lots.

We assign all our glazes with a low, moderate, high or very high rating. See our Glaze Guide for a complete description of glaze characteristics.

Glazing on relief tiles will vary in thickness and as a result the glazing may appear darker and lighter in different areas throughout the tile.

## TILE PREPARATION

Meticulously plan your layout. The time you take for preparation and placement will greatly impact the finished result.

- Pre-sort your tile by colour and size so you can distribute the range of variation throughout the installation.
- Blending is recommended.
- Inspect each tile for cracks or other deformities that make its use inappropriate for the application intended.

## TILE GROUTING

We advise a grout joint (1 to 4 mm) which joins the tiles so that they touch one another with an irregular space left between tiles, created by the imperfection of the edges.

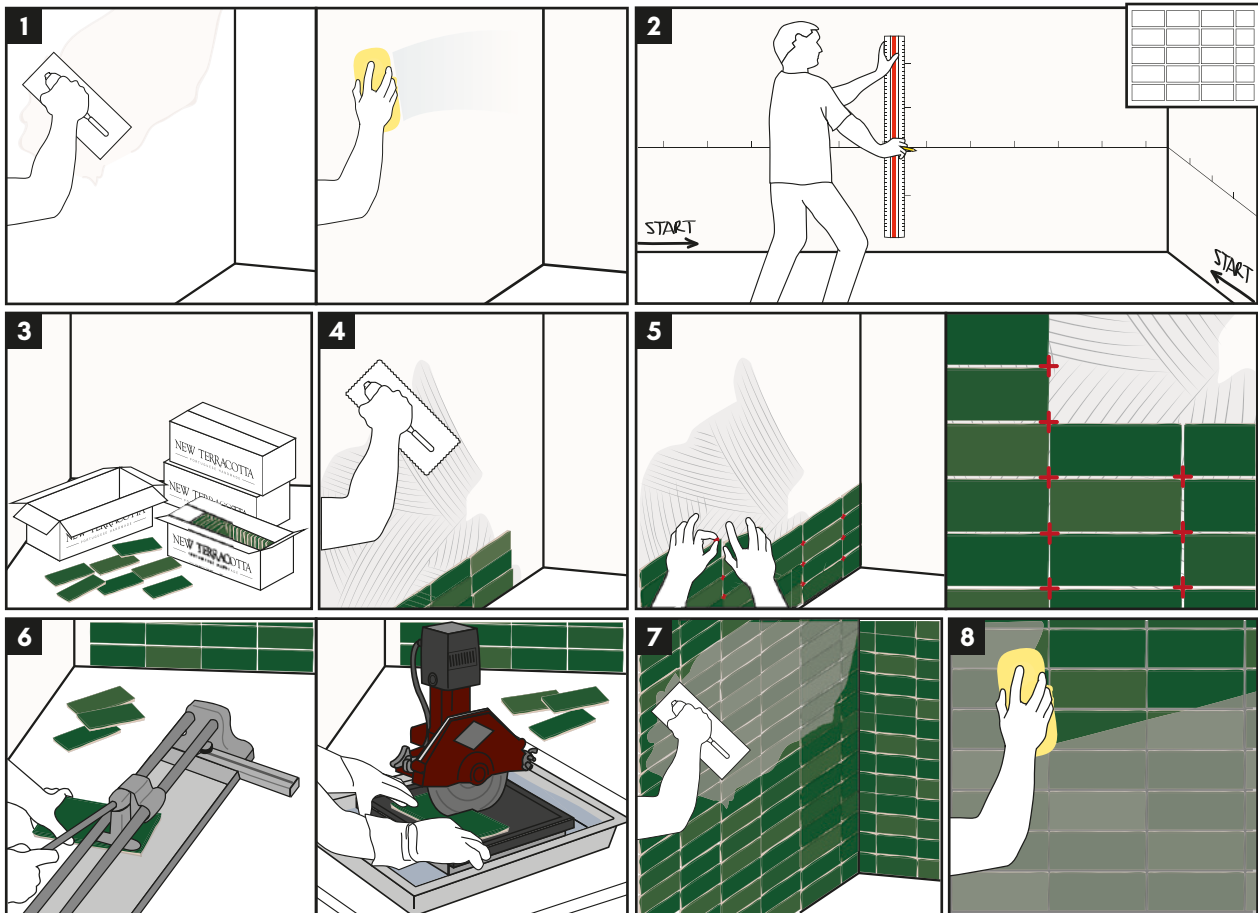
Grout joint width can be varied to adjust tile alignment with adjacent handmade tiles or other architectural elements.

Give design consideration to the grout colour as it relates to the colour of tile chosen. There may be a desire to accentuate the tile with a border of contrasting grout colour. To more closely connect each tile with each other, use a grout colour in a hue that approximates the colours found in the tile.

## TILE INSTALLATION

Install per industry standards for terracotta glazed tiles.

Proper substrate preparation and the right choice of adhesives and grouts for the type of tile and specific project conditions are critical for achieving a long-lasting installation. New Terracotta tiles can be installed with any conventional tiling method, using any mortars, adhesives (EN 1200 C2) and grout compounds (EN 13888) suitable for use with wall tiles.



1. **Prepare the surface.** Substrate must be clean, leveled and adequately set.
2. **Determine the layout and mark the surface.** For aesthetic and technical optimisation, define starting points and cuttings.
3. **Distribute the tiles.** Pre-sort your tile by colour and size so you can distribute the range of variation throughout the installation.
4. **Apply the proper tile adhesive.** Use a large-toothed trowel to spread the adhesive.
5. **Install the tiles.** Lay down tiles by lining them up and pressing them firmly into the adhesive. Installation is easier if you use X-shaped tile spacers.
6. **Cut the tiles.** If some tiles need to be trimmed, you can use either a snap tile cutter or a wet tile saw.
7. **Grout the joints.** Allow the adhesive to cure for about 24 hours and then fill in the joints with the selected grout, using a rubber grout float.
8. **Clean the tiles after grouting.** The excess grout must be cleaned immediately with a wet sponge, rinsing often.

## MAINTENANCE

New Terracotta Tile is a relatively maintenance-free product that requires little continuing care beyond regular cleaning. Continued beauty and performance of our tiles is assured by following these recommendations:

- For everyday cleaning, simply use a pH-balanced natural cleaner diluted in warm water.
- To clean stubborn spots or grout joins use a stiff natural bristle brush.
- Always avoid the use of abrasive cleaning pads or products containing bleach, ammonia and paint thinner.
- Never scrub with rough materials, such as hard brushes or wire wool, which may scratch the surface.
- In cooking areas, around a stove, on counters and backsplashes, cooking oil splatters should be cleaned as soon as possible as oil may darken some tiles.

The right choice of materials and installation methods is essential to the success of your installation. Some adhesives carry a warning that they may react adversely with certain types of tiles. New Terracotta recommends the using of MAPEI fixing materials and suggests contractors contact a MAPEI specialist for more information about their products.

For typical installations please consider:

PRODUCT	USE	ADHESIVE	GROUT
■ HANDMADE GLAZED TILES	Interior Walls Interior Wet Areas	MAPEI Keraflex	MAPEI Ultracolor Plus
	Exterior Walls	MAPEI Keraflex Extra S1	MAPEI Ultracolor Plus
	Swimming Pools	MAPEI Keraflex Extra S1	MAPEI Kerapoxy CQ

The New Terracotta technical support team is available to assist you in determining the best practice for your installation. For more information contact us.



Technical Features	Standards	Test Results	Compliance
 <b>Determination of water absorption</b>	EN ISO 10545-3	14,4 %	YES
	ASTM C 373-88	15,9 %	YES
 <b>Determination of module of rupture</b>	EN ISO 10545-4	R = 14,8 N/mm <sup>2</sup> S = 1066 N	YES
 <b>Determination of frost resistance</b>	EN ISO 10545-12	Not affected	YES
 <b>Determination of chemical resistance</b>  Household Chemicals Swimming Pool Salts Acids Alkali	EN ISO 10545-13	Class A	YES
	ASTM C 650-04	Not affected	YES
 <b>Determination of resistance to staining</b>  Green Chromium Iodine Olive Oil	EN ISO 10545-14	Class 5	YES
	ASTM C 1378-04	Not affected (limit at -20°C)	YES

New Terracotta Handmade Glazed Tiles, Group III.  
Test report, CTCV - Centro Tecnológico da Cerâmica e do Vidro.

We have the ability to do PTV tests (Pendulum Test Values) as well as LRV tests (Light Reflectance Values).



## Recycling

New Terracotta glazed tiles contain 25% to 28% recycled materials, depending on the product type.

info@newterracotta.com  
T. +351 214 681 626  
M. +351 912 900 271 | +351 917 333 000

www.newterracotta.com  
www.nwtmaterials.com

Polo Industrial Vale de Borregão,  
3450-097 Marmeleira MRT  
Portugal



Carta nº 123295

AZULEJARIA  
CERÂMICA DE CONSTRUÇÃO

D.L. nº 110/2002, de 16 de Abril  
**PORTUGAL**

Proud of being 100%  
Handmade in Portugal

**CENTRO** 2020

**PORTUGAL** 2020

