

NEW TERRACOTTA

**ZELLIGE TILES**

Technical Guide

2<sup>nd</sup> Edition 2020

NWT Zellige Tiles collection is suitable for most interior and exterior applications, including residential and commercial floors, walls, counters, showers, bathrooms, swimming pools, spas and fountains.

Because the purchase of NWT Zellige Tiles for your home or commercial project represents an important investment, proper installation and maintenance is critical.

## **?** TILE UNDERSTANDING

It is important to understand that the differences in colour, shape, size, texture and moisture absorption are the unique characteristics that distinguish each of these tile products.

Due to the artisanal methods carried out during the production process there will be small imperfections which are the unique character of zellige tiles.

Shade variation is inherent in all zellige and certain tiles will show greater variation within their dye lots.

## **!** TILE PREPARATION

Meticulously plan your layout. The time you take for preparation and placement will greatly impact the finished result.

- Pre-sort your tile by colour and size so you can distribute the range of variation throughout the installation.
- Blending is recommended.
- Inspect each tile for cracks or other deformities that make its use inappropriate for the application intended.

## **+** TILE GROUTING

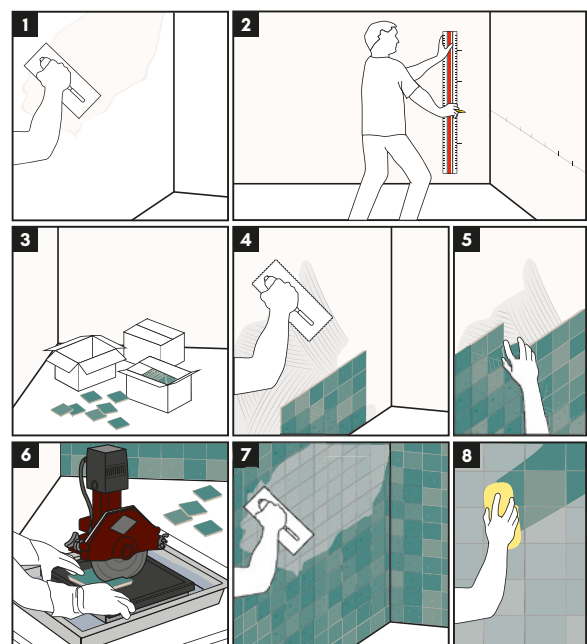
Grout joints are recommended as tight set since all zellige is hand-cut (one piece at a time) and therefore able to be set close to one another. We always recommend the use of a white or light grey cement grout.

## **➤** TILE INSTALLATION

Install per industry standards for zellige tiles.

Proper substrate preparation and the right choice of adhesives and grouts for the type of tile and specific project conditions are critical for achieving a long-lasting installation. NWT Zellige Tiles can be installed with any conventional tiling method, using any mortars, adhesives (EN 1200 C2) and grout compounds (EN 13888) suitable for use with wall tiles.

- 1. Prepare the surface.** Substrate must be clean, leveled and adequately set.
- 2. Determine the layout and mark the surface.** For aesthetic and technical optimization, define starting points and cuttings.
- 3. Distribute the tiles.** Pre-sort your tile by shade and mold so you can distribute the range of variation throughout the installation.
- 4. Apply the proper tile adhesive.** Use a large-toothed trowel to spread the adhesive.
- 5. Install the tiles.** Lay down tiles by lining them up and pressing them firmly into the adhesive.
- 6. Cut the tiles.** If some tiles need to be trimmed, you can use either a snap tile cutter or a wet tile saw.
- 7. Grout the joints.** Allow the adhesive to cure for about 24 hours and then fill in the joints with the selected grout, using a rubber grout float.
- 8. Clean the tiles after grouting.** The excess grout must be cleaned immediately with a wet sponge, rinsing often.



## MAINTENANCE

NWT Zellige Tiles is a relatively maintenance-free product that requires little continuing care beyond regular cleaning. Continued beauty and performance of our tiles is assured by following these recommendations:

- For everyday cleaning, simply use a pH-balanced natural cleaner diluted in warm water.
- To clean stubborn spots or grout joints use a stiff natural bristle brush.
- Always avoid the use of abrasive cleaning pads or products containing bleach, ammonia and paint thinner.
- Never scrub with rough materials, such as hard brushes or wire wool, which may scratch the surface.
- In cooking areas, around a stove, on counters and backsplashes, cooking oil splatters should be cleaned as soon as possible as oil may darken some tiles.

The right choice of materials and installation methods is essential to the success of your installation. Some adhesives carry a warning that they may react adversely with certain types of tiles. New Terracotta recommends the using of MAPEI fixing materials and suggests contractors contact a MAPEI specialist for more information about their products.

For typical installations please consider:

PRODUCT	USE	ADHESIVE	GROUT
■ ZELLIGE TILES	Interior Walls Interior Wet Areas	MAPEI Keraflex	MAPEI Ultracolor Plus
	Exterior Walls	MAPEI Keraflex Extra S1	MAPEI Ultracolor Plus
	Swimming Pools	MAPEI Keraflex Extra S1	MAPEI Kerapoxy CQ

The New Terracotta technical support team is available to assist you in determining the best practice for your installation. For more information contact us.

info@newterracotta.com

T. +351 214 681 626

M. +351 912 900 271 | +351 917 333 000

www.newterracotta.com

www.nwtmaterials.com

Polo Industrial Vale de Borregão,  
3450-097 Marmeleira MRT  
Portugal

